



Welcome to Kindlehill

Parent Handbook

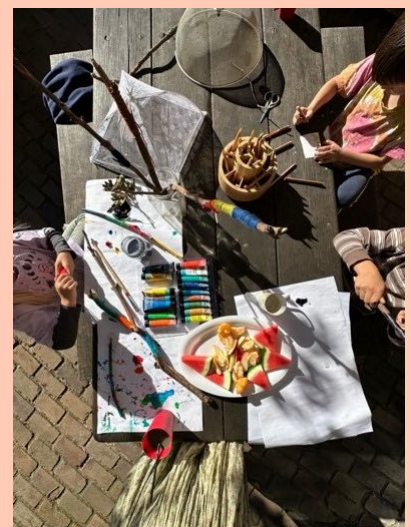
Values and Ethos



Kindlehill School

Welcome to the Kindleshill
School Community.

We are excited to grow
together.



Welcome to Our School Community



At Kindlehill relationships are at the heart of everything we do. We are a school where every child and every staff member belong – where each person is seen, valued and known for who they are. We believe that each person is part of something bigger than themselves: a community, a living world and a shared future.



Our Ethos and Educational Vision

Kindlehill provides an education kindled in spirit and steeped in wisdom. It is one that cultivates imagination, courage, compassion, and practical ways of living that contribute to a more just and balanced world. We nurture in our students the confidence and strength to step into a life with purpose and to place their gifts and abilities in service to what they deem meaningful.



Our Purpose

Our purpose is to create a safe, nurturing environment where every child can thrive academically, emotionally and socially. We provide a connected, earth centred and resilience oriented educational path for children and young people to build a brighter and compassionate future.



Place, Country, and Community

We are profoundly grounded in an incredibly significant World Heritage Environment, where we live together with waterways, forests, birds and critters. Throughout their education we want our children and young people to feel the beauty and uniqueness of this place, and to honour Dharug and Gundungurra Country as teacher. We walk together with First Peoples, and the wider Blue Mountains community, in restorative and celebratory actions and ways of living and learning.



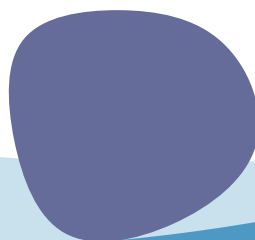
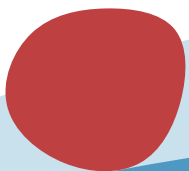


Our Approach to Teaching and Learning

Our education is inspired by the evolving insights of Rudolf Steiner's pedagogical approach, thoughtfully interpreted for our time and place.

In **kindy**, play based learning fosters wonder, joy and connection. Through story, song movement and rhythm, we cultivate foundational values of kindness, respect, generosity and resilience.

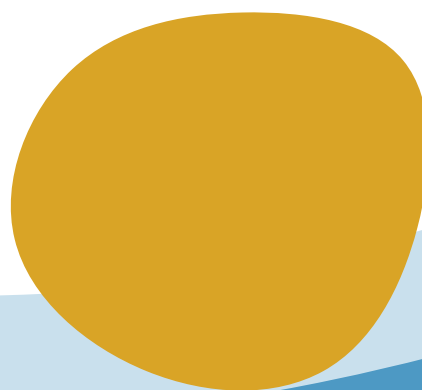
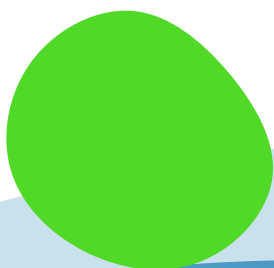
In the **Primary Years**, academic learning is integrated with artistic, experiential and imaginative work that strengthens the child's inner life, social connections and love for learning.





In the **High School Year**, students engage with complex questions and deepen their understanding of the world through purposeful and relevant learning. Aesthetic and ethical discernment is cultivated, guiding them to participate resourcefully and responsibly in society.

In the **Senior Year**, students examine the challenges of our time with critical thinking, creativity and compassion. They apply their learning through significant, real-world projects that contribute to the well being of our local community and beyond.



Our Community Values

Kindlehill is a place of kindness, curiosity and celebration. We commit to supporting every child and young person to unfold their potential in a way that fosters well-being – of self, others and the planet.

To be part of the Kindlehill Community is to participate in an evolving social deed:

One that values
connection over
competition

Contribution
over
consumption

Integrity,
authenticity
and joy in
learning

We invite families to walk with us on this shared path, co creating an education that kindles a light for the world.





Parent Responsibilities

At Kindlehill, we believe that education is a shared journey between school, family, and community.

As a parent or caregiver, your active support and involvement is vital to your child's growth and to the rich, whole-school experiences that define our educational approach.



Music Programme & Home Practice

Music is an integral part of life at Kindlehill. It fosters creativity, discipline, collaboration, and joy. All students participate in the music program. The primary school children will take up an instrument and High School students are offered lessons.

What's expected:

- Support regular home practice—especially in the early stages—to develop skill, confidence, and a love for music.
- Ensure your child brings their instrument and music materials to school as required.
- Support your child's attendance at Ensemble Lessons and rehearsals which may at times be out of normal school hours.
- Attend performance opportunities and school concerts when invited, helping to affirm your child's learning and celebrate their achievement.





Outdoor Education & Participation

Outdoor education is core to our curriculum. It builds resilience, cooperation, a connection to Country, and an understanding of place-based learning.

What's expected:

- Provide appropriate outdoor gear for camps and excursions (e.g. weatherproof clothing, suitable footwear, water bottles, sleeping gear).
- Support your child's full participation in planned activities and overnight experiences, understanding these are key to their social and emotional development.
- Communicate with teachers of your child has specific needs or hesitations around outdoor program so we can work in partnership to support them.
- Provide practical support as requested from staff. This may include providing meals, transport and support on camps.



Drama, Performances & Out-of-Hours Commitment

Drama at Kindlehill is not only artistic expression—it's a vehicle for developing empathy, confidence, voice, and group cohesion. Class plays, musical theatre and storytelling are woven throughout the years and culminate in beautiful community-inclusive events.

What's expected:

- Support your child's participation in rehearsals and performances, some of which may take place outside of normal school hours.
- Help with costuming, set building, or event support if you are able – these contributions are part of our community ethos.
- Attend performances where possible, provide encouragements through your presence and applause.



Technology, Social Media

At Kindlehill, we are committed to creating an environment that supports healthy social development, focused learning and meaningful in-person relationships. To this end, we ask families to support the policies and principles regarding phone and social media use. In working together, we can reinforce a consistent supportive approach to digital citizenship which develops a healthy and balanced relationship with technology.

What's expected:

- Student phones are kept in their school bags. They cannot access their phones during school hours.
- We ask families to delay access to social media for Primary school aged children.
- When students are on social media we ask that it be used sparingly, under active adult supervision with clear boundaries.
- We ask families to regularly discuss online behaviours, privacy and respectful communication
- We expect low tech, high connection play dates and gatherings. Children benefit most from creative, active and tech free play that fosters imagination and interpersonal skills.
- Families are invited to collaborate on setting shared expectations that minimise screen time and encourage inclusive, engaged social experiences



Support for the Wider School Community

Kindlehill thrives on the goodwill and contribution of its families. We ask that parents participate in the life of the school that reflect our shared values.

What's expected:

- Engage in open and respectful communication with teachers and staff. Please see our Communications Protocol for a more in-depth description of our expectation regarding communication.
- Read newsletters and notices to stay informed and involved.
- Offer your time and skills to working bees, fundraisers, festivals and celebration or community events when you can – every little bit helps!
- Uphold and reinforce school values – kindness, respect, responsibility, inclusion – at home in the community settings.



Together we create a vibrant, caring
and engaged school community –
one where children are guided,
strengthened and empowered.

Thank you for being part of it.



Acknowledgement



Kindlehill is situated on Dharug and Gundungurra land; we pay respects to the traditional custodians whose cultures and customs continue to nurture this land.

We support the Uluru Statement from the Heart, Truth-telling about the impact and legacy of colonisation, a Voice to Parliament enshrined in the Australian Constitution and a process of Treaty making.



Kindlehill School